

# FXDirectDealer Windows Trader User Guide

---

## Opening an account

To install the program, [download](#) the [fxddwin.exe](#) file. You will be required to open a demo account.

**Open an account**

**FXDIRECTDEALER**  
A TRADITION GROUP COMPANY

To open an account, please complete all the following fields in English:

Name \*: John Smith

Country \*: United States State \*: NY

City \*: New York Zip code \*: 10007

Address \*: 75 Park Place

Phone \*: 2127913933 Email \*: jsmith@earthlink.net

Leverage: 1:50 Account Type: forex miniforex Deposit: 5000 \$

I accept to subscribe into your news letters

Register >>

The demo account registers your trading operations and allows you to work on your trading strategies. To open the demo account it is necessary to fill in all the fields. When registering you can choose the value of the leverage (**Leverage**) and indicate the size of the initial deposit in the **Deposit** field. You can choose the account type (the **Account Type** field):

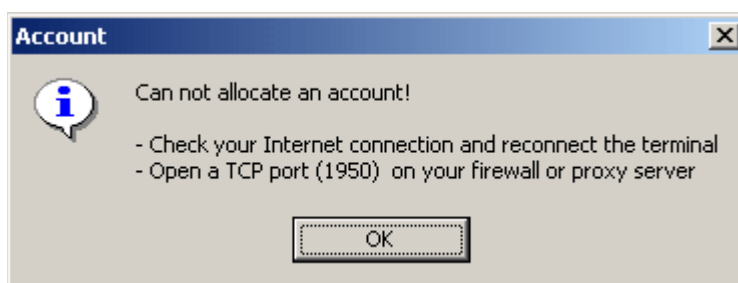
- **Forex** - open the demo account at FOREX;
- **MiniForex** - open a demo account to work at mini-Forex;


You must also check the **'I accept to subscribe into your news letters'** and select the **'Register'** button.

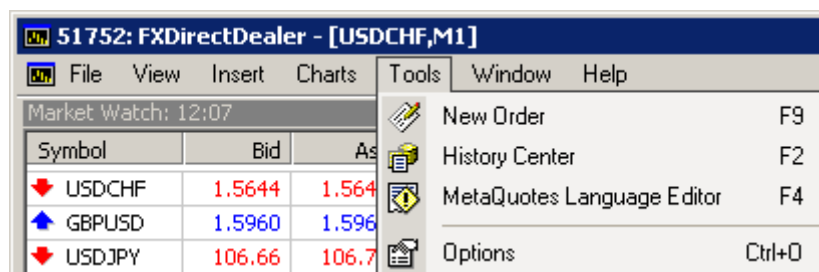
In the case of successful demo account registration, the window with the login and password will appear.



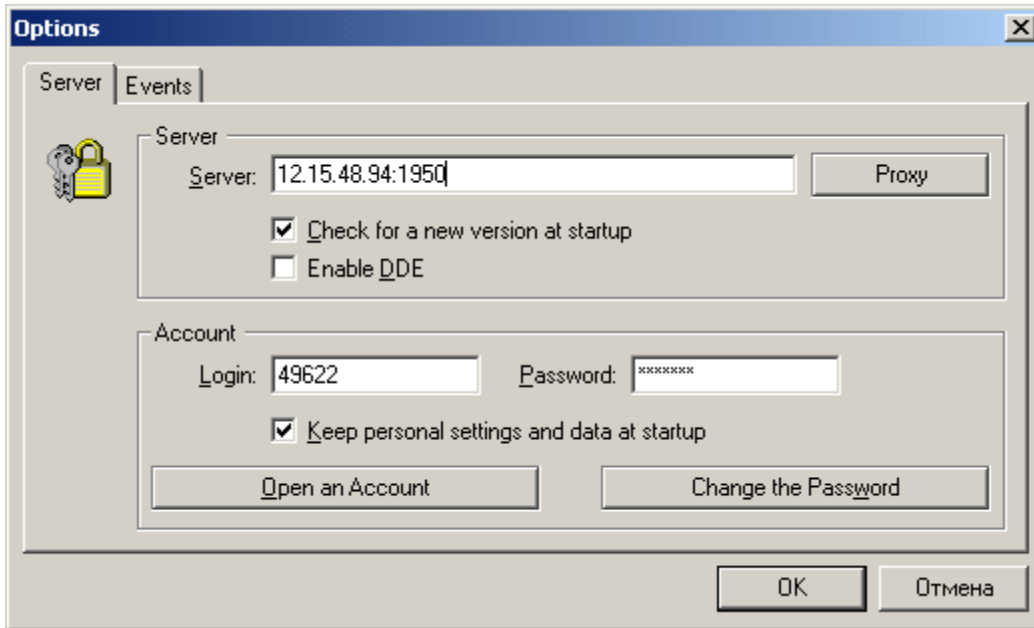
If a new demo account was not registered successfully, the message '**Can not allocate an account!**' will appear.



In this case, it is recommended to check your Internet connection and to check the client terminal **options**. You can open a demo account by selecting the '**Tools - > Options**' menu, by key combination '**Ctrl-O**' or by clicking the button : .



The window will appear:

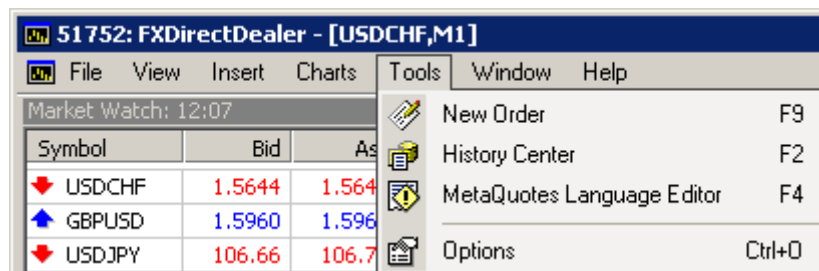


Select **'Open an Account'**. You can open an account from the **'Navigator'** window by selecting the **'Accounts'**, by clicking the right mouse button and by selecting **'Open an Account'** from the scroll-down menu.

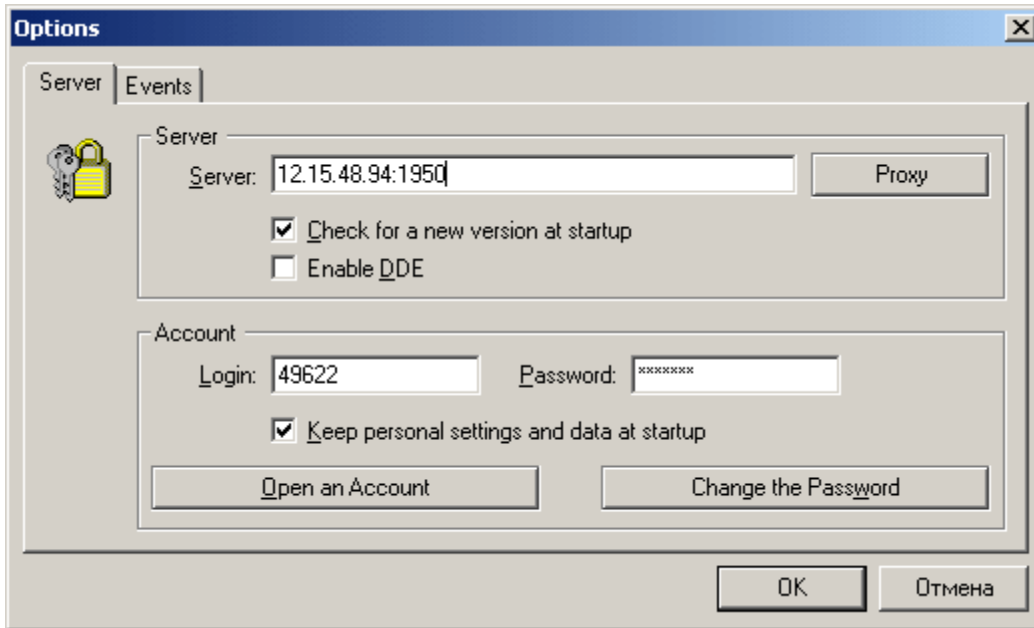


### Server and account settings

To set the client terminal you should select **'Tools - > Options'** menu or by using the key combination **'Ctrl-O'** or by clicking the button: 



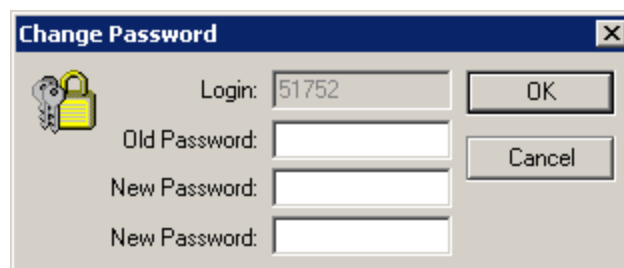
Following window will appear:



If you want to connect the client terminal to the server you should know the IP address or domain name of the WindowsTrader server. The connection to the server is made through port 1950. It should be written "address: 1950" in the **'Server'** field. When ticking **'Enable DDE'** the quotes coming to WindowsTrader are translated outside through the dynamic data exchange protocol. You can see an example of the terminal use for MS Excel in the DDE Sample file (WindowsTrader program group). The account number (or login) and password should be indicated in the account settings. This information will be saved in your computer memory if you tick the **'Keep personal settings and data'** option.

### Changing

### Password

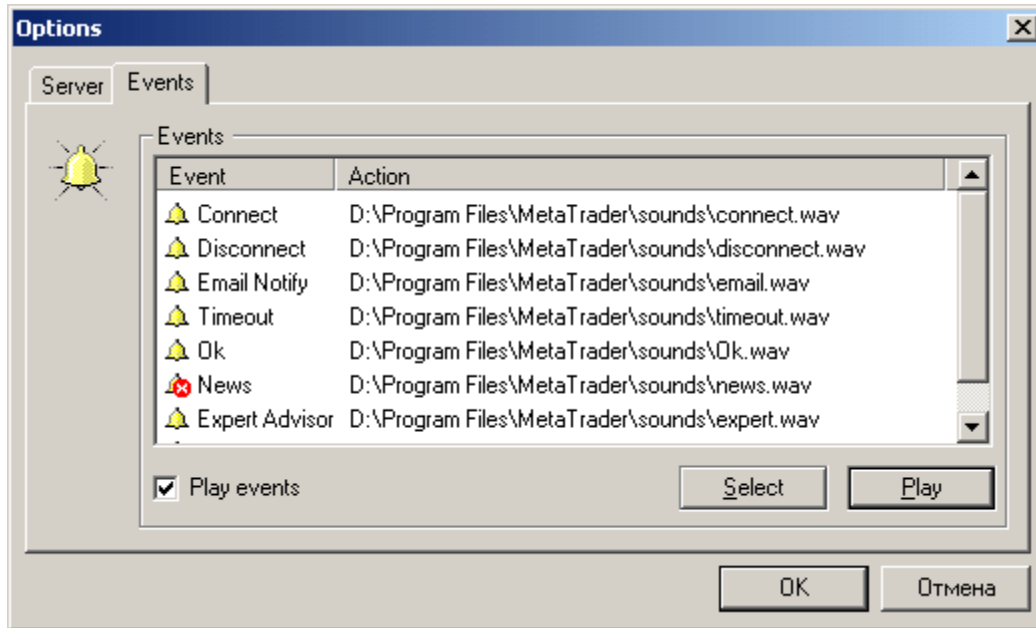


To change your password, you should enter the existing password and then enter your new password twice (to check the entry accuracy).

You can also [open a new account](#).

### Events setup

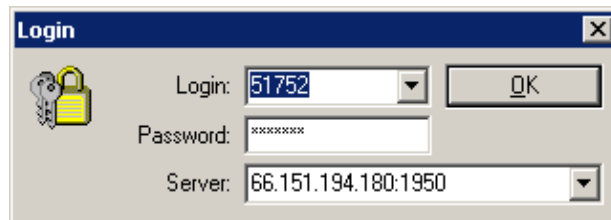
The event setting specifies a special sound for each event (i.e., a audio file having the WAV extension or other file which can be performed in operation system). To disable the sound, delete the tick from the **'Play events'** field.



- **Play events** - notifications on/off;
- **Select** - select the file to be notified;
- **Play** - play the sound notification/run the notifying application.


### Authorization

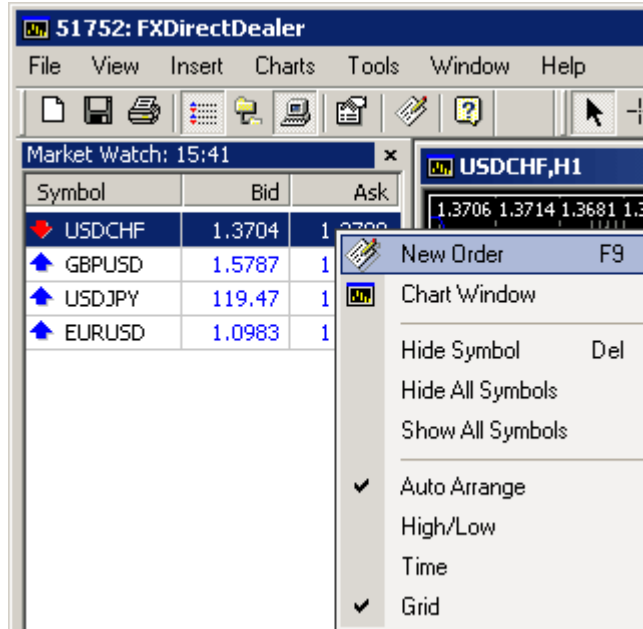
Authorization can be performed automatically by saving **personal data**. If personal data is not saved you will be asked to enter the login, password and server.



Authorization can also be performed from the '**Navigator**' window of the '**Accounts**' menu allowing you to switch from one account to another.

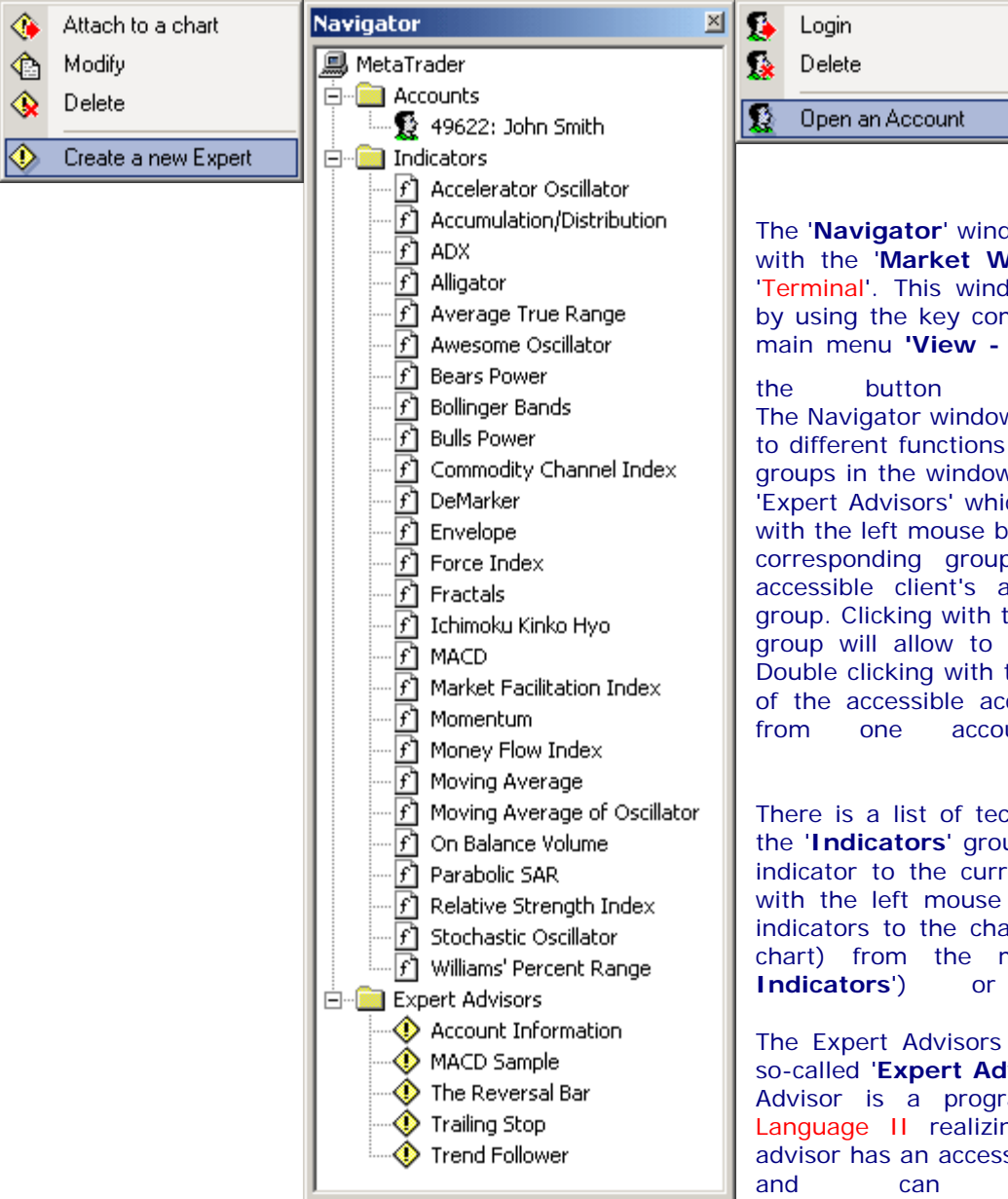
### Market Watch


The quotes window '**Market watch**' is a service window along with the '**Navigator**' window and with the '**Terminal**'. This window can be enabled/disabled by pushing the key combination '**Ctrl - M**' from the main menu '**View - > Market Watch**' or by clicking the button  of the toolbar.



The list of the instruments selected is placed in the **'Market Watch'** window. This list may be empty at first. When clicking with the right mouse button the menu will appear where you can select the **'Show All Symbols'** line. The quotes on these instruments will come in the **'bid; ask; high; low; time'** format. To minimize the traffic you can exclude some instruments from your 'Market Watch' by selecting **'Hide Symbol'** or by clicking the **'Del'** button. In this case, the quotes will come only for the instruments selected. Open the chart window on the instrument you need (**'Chart Window'**) from the contextual menu. When selecting the **'New Order'** command either by clicking **'F9'** or by double clicking the instrument selected, the form to expose the order will be shown.

## Navigator




The **'Navigator'** window is a service window along with the **'Market Watch'** window and with the **'Terminal'**. This window can be enabled/disabled by using the key combination **'Ctrl - N'** from the main menu **'View - > Navigator'** or by clicking the button  on the toolbar. The Navigator window allows to get a quick access to different functions of the program. There are 3 groups in the window: 'Accounts', 'Indicators' and 'Expert Advisors' which can be opened by clicking with the left mouse button at the '+' sign near the corresponding group. There is a list of the accessible client's accounts in the **'Accounts'** group. Clicking with the right mouse button at the group will allow to open a new demo account. Double clicking with the left mouse button on one of the accessible accounts allows you to switch from one account to another one.

There is a list of technical indicators available in the **'Indicators'** group. You can add the selected indicator to the current chart by double clicking with the left mouse button. You can also insert indicators to the chart (or delete them from the chart) from the main menu (**'Insert - > Indicators'**) or from the menu.

The Expert Advisors group includes a list of the so-called **'Expert Advisors'** available. The Expert Advisor is a program written in **MetaQuotes Language II** realizing a trading strategy. The advisor has an access to the trading terminal data and can deal automatically. You can **'Create a new Expert'**, **'Delete'**,

**'Modify'**, or **Attach to a Chart**. When creating a new expert or modifying an existing expert, the MetaEditor will appear. If the experts' items are red they are not allowed for demo trading. Please contact your sales representative for further assistance.

### Terminal

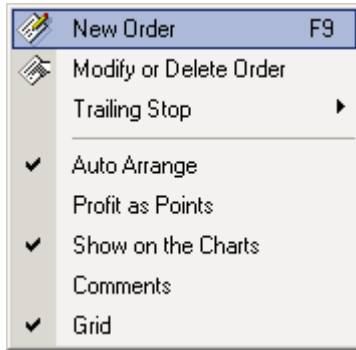
The **'Terminal'** window can be enabled/disabled from the main menu (**'View - Terminal'**), by pushing the key **'Ctrl - T'** or by clicking the button  of the toolbar. The information shown in the terminal is grouped into several sections:

### Trade

Terminal											
Ticket	Time	Type	Lots	Symbol	Open ...	S / L	T / P	Cur Price	Comm	Swap	Profit
345231	2003.04.22 13:26	sell	1.00	usdchf	1.3731	0.0000	0.0000	1.3730	0.00	0.00	7.28
Balance: 5000.00 Credit: 0 Equity: 5007.28 Margin: 1000 Free margin: 4007 Margin level: 500.7%											7.28

Trade | News | Account History | Alerts | Mailbox | Journal

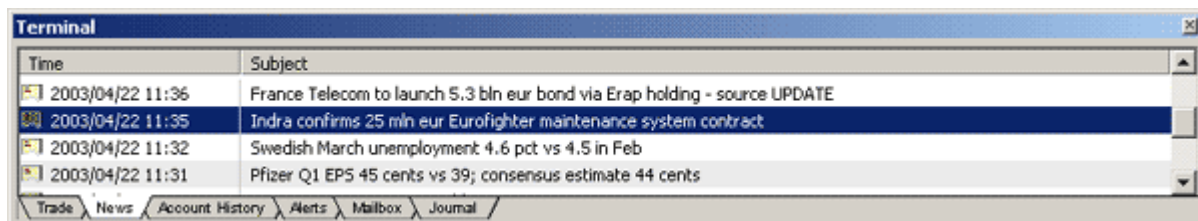
In the **'Trade'** section, you can find your current account status including open positions and pending orders.



The following clauses are available in the contextual menu:

- **New order** - open the dialogue box for setting the orders;
- **Modify or Delete Order** - **modify** the levels of 'Stop Loss' or 'Take Profit', level of the 'Pending Order', **delete** the pending order;
- **Trailing Stop** - change the Trailing Stop level. Select the value of Trailing Stop (to **80** pips) in the sub-menu, or **'None'** to deactivate the Trailing Stop function for the selected order, or **'Delete All'** to deactivate the Trailing Stop function for all orders;
- **Auto Arrange** - automatic setting of the columns when changing the trading terminal window size;
- **Profit as Points** - show the profit/loss in pips or in dollars;
- **Show on the Charts** - show/hide levels of the open positions, pending orders, chart;
- **Comments** - show/hide the **'Comments'** column;
- **Grid** - show/hide the grid to separate the columns from each other.

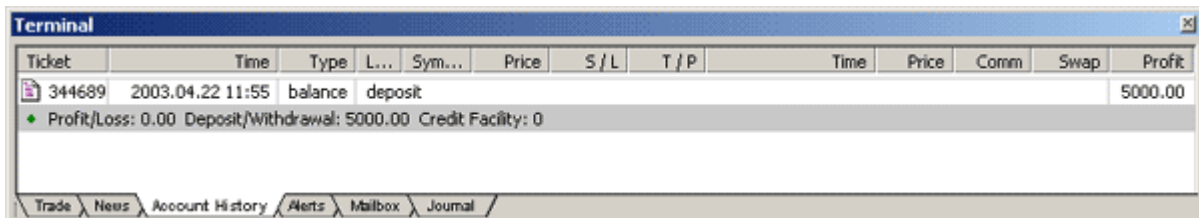
## News



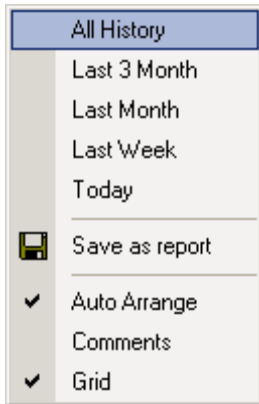
News can be read by double clicking on the headline or by selecting the **'View'** menu item.

- **Auto Arrange** - automatic arrangement of the column size when changing the trading terminal window size;
- **Grid** - show/hide the grid to separate the columns from each other.

## Account history



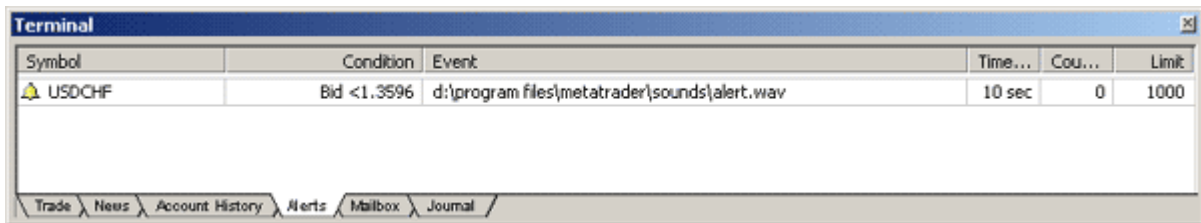
The list of the deals made on the current account is placed in the **'Account history'** section.



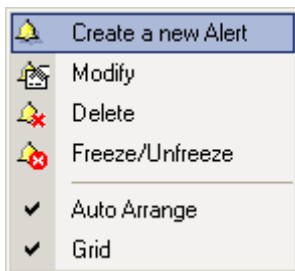
Using the contextual menu you can filter the list of operations.

- **All History**;
- **Last 3 Month**;
- **Last Month**;
- **Last Week**;
- or only **Today**'s history can be shown;
- The current list can also be stored on the hard disk as a report in HTML format with the aid of contextual menu ('**Save as Report**');
- **Auto Arrange** - automatic arrangement of the columns when the trading terminal window size is changed;
- **Comments** - show/hide the '**Comments**' column;
- **Grid** - show/hide the grid to separate columns from each other.

## Alerts



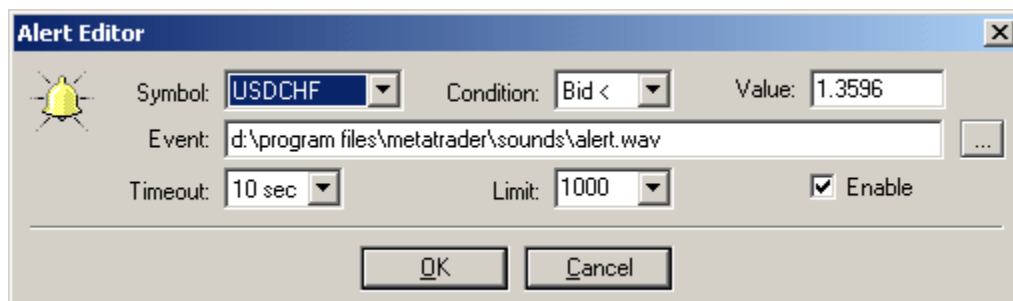
The list of the defined signals is in the '**Alerts**' section. Having defined the signal, a trader can easily leave the monitor. The WindowsTrader will alert the trader by giving out a sound signal or by realizing an .exe file that some condition was performed.



The contextual menu includes the following clauses:

- **Create a new Alert**;
- **Modify** already existing alert (same as double clicking on alert):
- **Delete** existing alert;
- **Freeze/Unfreeze** - the same as on/off alert;
- **Auto Arrange** - automatic arrangement of the column width;
- **Grid** - show/hide the grid to separate columns from each other.

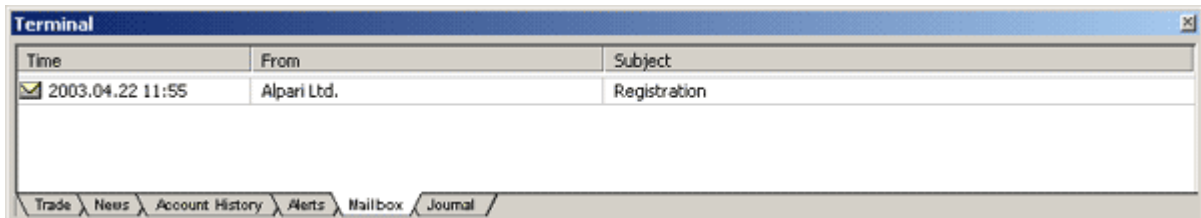
You can indicate any file type registered in Windows (wav, exe, etc.) as an event for alert to react.



- **Symbol** - instrument;

- **Condition** - (time, bid<, bid>, ask<, ask>);
- **Value** - relates to the condition;
- **Event** - event which will happen in the case of performing the condition;
- **Enable** - enable/disable the alert.

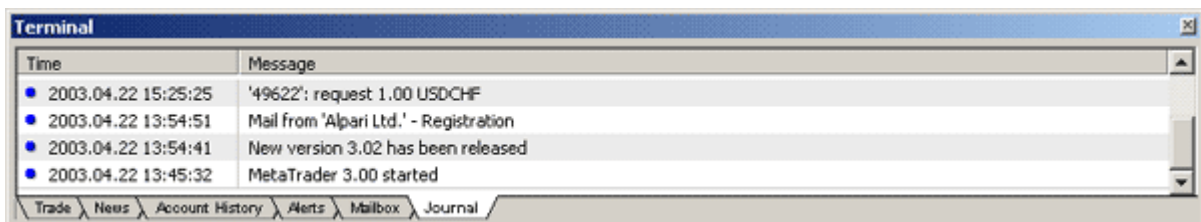
## Mailbox



The list of all messages appear in the 'Mailbox' section. You can also view the content of the message by double clicking the left mouse button on the selected message.



## Journal

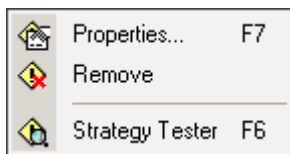


The list of user and client terminal actions fixed during the current session is in the **'Journal'** section. Deals, the used advisor experts, information on their operation, and information on the operation of the client terminal are all fixed.

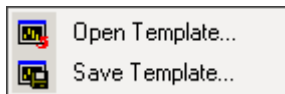
### Chart Setup

The chart menu includes:

- **Indicators** - opening the window of **'Indicators'**;
- **Expert Advisor** - the menu of the lower level will appear where you can change the settings (**'Properties...'**), delete (**'Remove'**) or test the history (**'Test Strategy'**) of the expert attached:



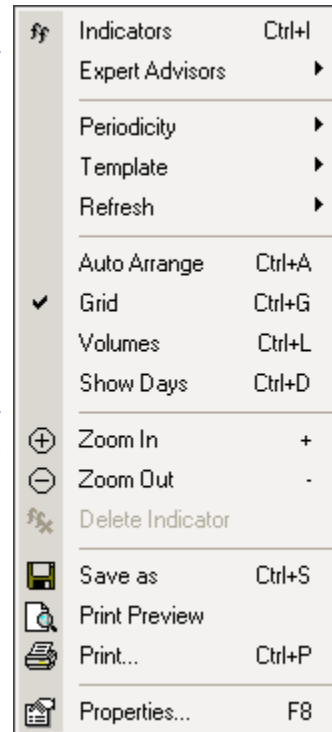
- **Periodicity** - selecting the periods of time for the chart;
- **Template** - the menu of the lower level will appear where you can load a pre-saved chart template (settings and indicators) (**'Open Template'**) or save the chart settings as a template (**'Save Template'**):



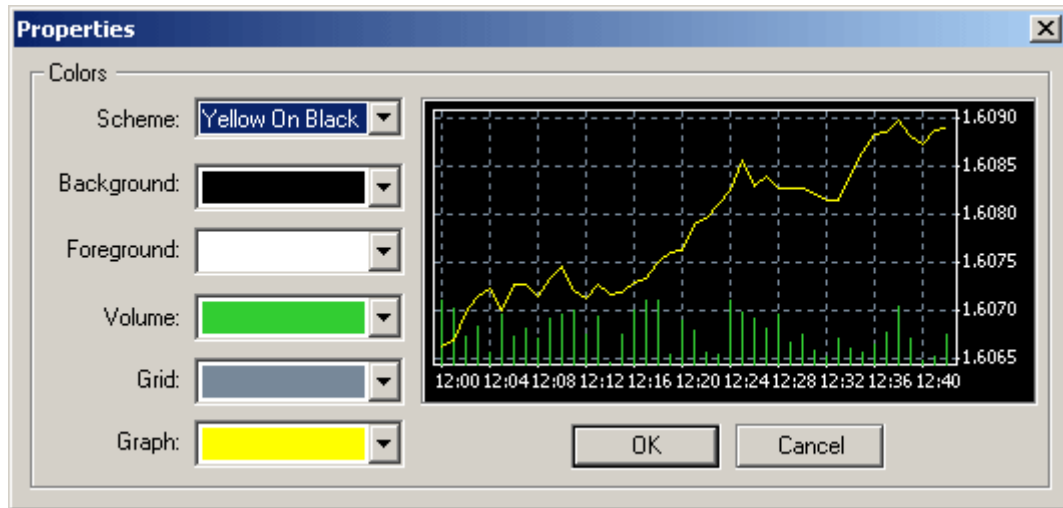
- **Refresh** - the menu of the lower level will appear where you can both refresh the chart (**'Refresh'**) and refresh the chart with simultaneous erasing of the local quotes base (the new quotes base to be downloaded from the server) (**'Erase & Refresh'**):



- **Auto Arrange** - arrange indicators in the chart;
- **Grid** - show/hide the grid in the chart;
- **Volumes** - show/hide the chart of volumes;
- **Zoom In** - enlarge the chart;
- **Zoom Out** - miniaturize the chart;
- **Delete Indicator** - (active only when the mouse clicked on the indicator shown under the price chart);
- **Save as** - save the chart in the disk in the selected format (\*.CSV, \*.PRN, \*.HTM);
- **Print Preview** - preview before printing;
- **Print** - print the chart;
- **Properties..** - different windows will be shown depending on the point where the mouse clicked:



1. When clicking in the empty space of the chart:



You can choose between three standard color schemes in this window by selecting the '**Scheme**' value, or you can set the chart colors according to your taste:

- **Background** - the background color;
- **Foreground** - the color of time scale and that of price scale;
- **Volume** - the color of the volume chart;
- **Grid** - the grid color;
- **Graph** - price charts color.

2. When clicking in the chart in a separate field with the indicator enabled:

Window with settings of this **Indicator** setup will appear.

#### Hot keys to work at the chart window:

- cursor arrows **Left** and **Right** arrows - scroll the chart to the right and to the left;
- **Home** and **End** allow to move to the beginning and to the ending parts of the chart;
- '+' and '-' - will enlarge or miniaturize the chart;
- **Alt+1** - show the chart as Bars;
- **Alt+2** - show the chart as Candelsticks;
- **Alt+3** - show the chart as Lines;
- **Ctrl+G** - grid on/off;
- **Ctrl+L** - volume on/off;
- **Ctrl+A** - auto arrangement of indicators;
- **Ctrl+I** - open the window of indicators;
- **Ctrl+S** - save the chart in the selected format (\*.HST,\*.CSV,\*.PRN,\*.HTM);
- **Ctrl+P** - print chart in black-white colors;
- **Delete** - delete the last added object in the chart;
- **Backspace** - deleting the last added object;
- **F7** - opens the window of the active expert setting;
- **F8** - opens the window of the chart or indicator setting.

## How to work on the chart using your mouse:

- you can move the chart in different directions by clicking the left mouse button and moving it horizontally;
- you can change the vertical scale of the chart by clicking the left mouse button in the chart price field and moving it vertically;
- you can change the horizontal scale of the chart by clicking the left mouse button in the chart date field and moving it horizontally;
- you can open the contextual menu by clicking the right mouse button on the chart;
- you can select an object by double clicking the left mouse button on it (trend, line, symbol, fibonacci);
- you can edit the selected object by clicking the left mouse button on the selected object and then moving it;
- **Ctrl** + clicking the left mouse button on the selected trend with the following moving of it allows to create a parallel trend;
- you can open the object setting window by clicking the right mouse button on the selected object.











## Charts

## bar

The '**Charts**' bar is made as a floating window which can be attached to the left, right or low margin of the program window.



Using the 'Charts', you can:

- Change the chart type for:  
 - Bar;  
 - Candelsticks;  
 - Line;
-  - Zoom in;
-  - Zoom out;
-  - Open the template by default (chart settings and indicators set);
-  - save the template by default (chart settings and indicators set);
- When the button  is clicked after a new quote has come, the chart will be automatically replaced to the left to such extent that the chart right margin can be seen well;
- When the button  is clicked, the right margin of the chart is not attached to the right side of the window, but it is in the middle of the window;
- The clicked button  allows usage of the Expert Advisor.



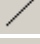







## Graphical instruments


You can add different symbols and lines to the chart. You can use the '**Insert**' menu or buttons of the bar to add lines and symbols. You can delete lines and symbols one by one by using the '**BackSpace**' button or by the '**Charts**' menu. You can also delete all the lines and symbols by the '**Charts**' menu. To edit the objects you should select by double clicking the mouse, click the right mouse button, and select '**Properties**' (the selected object can also be

moved and deleted out of turn). The selected objects can be moved independently from each other. The 'Line Studies' bar is performed as a floating window which can be attached to the left, right or low margin of the program window.




 - the 'Crosshair' allows to position the mouse cursor exactly in the chart. You can add the following elements to the chart using the 'Line Studies' bar:

	Vertical	Line;
	Horizontal	Line;
	Trend	Line;
	Andrews`	Pitchfork;
	Gann	Fan;
	Fibonacci	Fan;
	Fibonacci	Arcs;
	Fibonacci	Retracement;
		Symbols;
		Text.

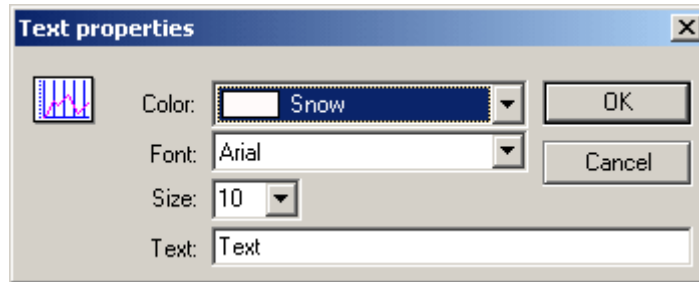
To add a vertical or horizontal line, select the corresponding button of the 'Line Studies' bar and click the left mouse button at the desirable place in the chart. To add the trend line or Fibonacci retracement select the corresponding button of the 'Line Studies' bar, then click the left mouse button (and do not leave it) at the first point of the trend (at the point of the start moving for retracement), move the cursor to the second point of the trend (to the point of stop moving for retracement) and leave the left mouse button. To make the canal line, push **Ctrl + click the left mouse button at the selected trend**. Move the mouse without leaving the button on it. A new trend parallel the selected one will follow the cursor. To add the symbol you should click the button . An auxiliary menu will appear:



Select the desirable symbol. Then click at the desirable place of the chart. To add the text in the chart:

- Click the button ;
- Click in the desirable place of the chart;
- Double click the appeared inscription 'Text', the outline around the inscription will appear;

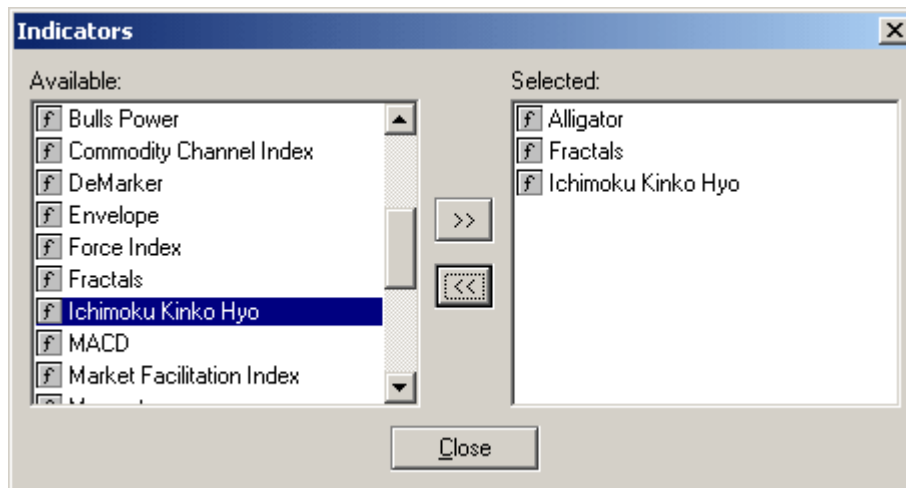
- Click the right mouse button above the inscription and select the **'Properties...'** in the menu :


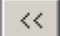


- Edit the inscription properties and press **'OK'**;
- Double click the mouse to unselect it. The outline should disappear.

## Indicators

You can add technical indicators to the chart using the **'Navigator'** window, or indicators window (menu **'Insert -> Indicators'**, **'Ctrl+I'**).



All indicators are in the **'Available'** group, and those you want to see in the chart are in the **'Selected'** group. To add an indicator to the chart, select it in the 'Available' group and click the  button. The indicator will appear in the 'Selected' group. After the indicators window has been closed this indicator will appear in the chart. To delete an indicator from the chart select it in the 'Selected' group and click the  button. The indicator will disappear from the 'Selected' group.

When using the same set of indicators, you can use the **'Template'**: having set a complex of indicators in one chart, select **'Template -> Save Template'** in the **'Charts'** menu or in the contextual menu. To use the saved set of indicators in another chart, select **'Template -> Open Template'**. After the indicators window has been closed, it will disappear in the chart, as well.

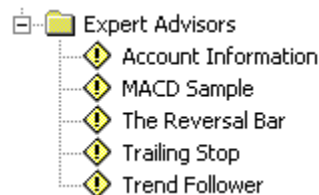
Indicators available in WindowsTrader:

- Accumulation/Distribution;
- ADX;
- Average True Range;
- Bollinger Bands;
- Commodity Channel Index;
- DeMarker;
- Elder-rays;
- Envelopes;
- Force Index;
- Ichimoku Kinko Hyo;
- MACD;
- Market Facilitation Index;
- Momentum;
- Money Flow Index;
- Moving Average;
- Moving Average of Oscillator;
- On Balance Volume;
- Parabolic SAR;
- Relative Strength Index;
- Relative Vigor Index;
- Stochastic Oscillator;
- Williams' Percent Range;
- Williams' Alligator;
- Awesome Oscillator;
- Accelerator/Decelerator Oscillator;
- Fractals; and
- Gator Oscillator.

## Experts

'**Expert Advisors**' are used to automate the trading process. Many professional traders have a big amount of trading systems allowing them to work in different markets and under different conditions.

Expert Advisors sends signals generated by trading systems to a trader's real account to manage open positions, orders and stops.



## Opening Positions and Pending Orders

Opening of a position or setting a pending order can be performed several ways:

- '**Tools -> New Order**' in menu or '**F9**';
- double click at the exchange rate in the '**Market Watch**' window;
- right click on the trading '**Terminal**' window (the '**Trade**' section) and select the '**New Order**'.

The dialogue box will appear which can help to open a position or to set a pending order:

**New Order: John Smith**

Ticket

Symbol: EURUSD   Lots: 1.00   Stop Loss:   Take Profit:

Market Order

Please Request   1.00 EURUSD

Sell   Request   Buy

Limit or Stop Order

Type: Buy Limit   1.00 EURUSD   at price: 0   Send

Close

You can select an instrument (the '**Symbol**' field) or a number of lots (the '**Lots**' field). The number of lots may represent a fractional number having a step of 0.1, but not less than minimum contract.

**New Order: John Smith**

Ticket

Symbol: EURUSD   Lots: 1.00   Stop Loss:   Take Profit:

Market Order: 5

1.0993 / 1.0998   1.00 EURUSD

Sell   Request   Buy

Limit or Stop Order

Type: Buy Limit   1.00 EURUSD   at price: 0   Send

Close

After having dealt you will see the open position in the trading '**Terminal**' window. If the current market prices do not satisfy your needs you can set a pending order. A Pending order is an order to buy or to sell a certain amount of lots at a certain price when the market reaches this certain price. To set a pending order you should fill in the fields '**Type**' (order type), '**At price**' (order price), '**Symbol**' (instrument) and '**Lots**' (the number of lots).

**New Order: John Smith** [X]

Ticket

Symbol: EURUSD    Lots: 1.00    Stop Loss:    Take Profit:

---

Market Order

Please Request    1.00 EURUSD

Sell    Request    Buy

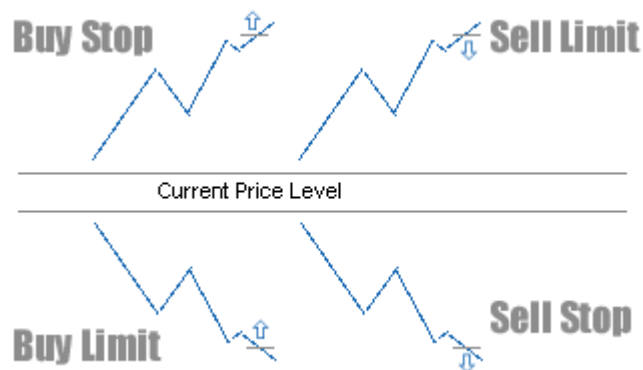
---

Limit or Stop Order

Type: Buy Limit    1.00 EURUSD    at price: 1.0975    Send

Close

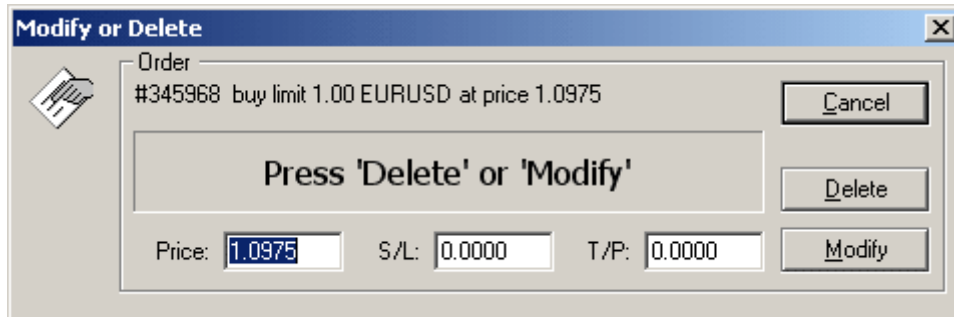
Rules of pending orders setting:



Then click the **'Send'** button. Information about the trade will appear in the trading **'Terminal'** window. If your pending order parameters were incorrect the message **'Invalid Price'** will appear. This means you are trying to set the order too close to the current price (closer than the spread value for this instrument), or you have selected a wrong order type (**'Buy Limit, Buy Stop, Sell Limit, Sell Stop'**). As a separator for the whole and fractional parts of the lot size you should use a DOT, not a comma. When opening a position and when setting a pending order, you can set Stop Loss and Take Profit at once. You can do it by filling in the fields **'Stop Loss'** and/or **'Take Profit'** (before clicking the **'Request'** or **'Send'** button). **You can change the level of a pending order** in several ways:

- Click on the window (the **'Trade'** section) and select **'Modify or Delete Order'** in it;
- Make a double click on the pending order in the trading terminal window.

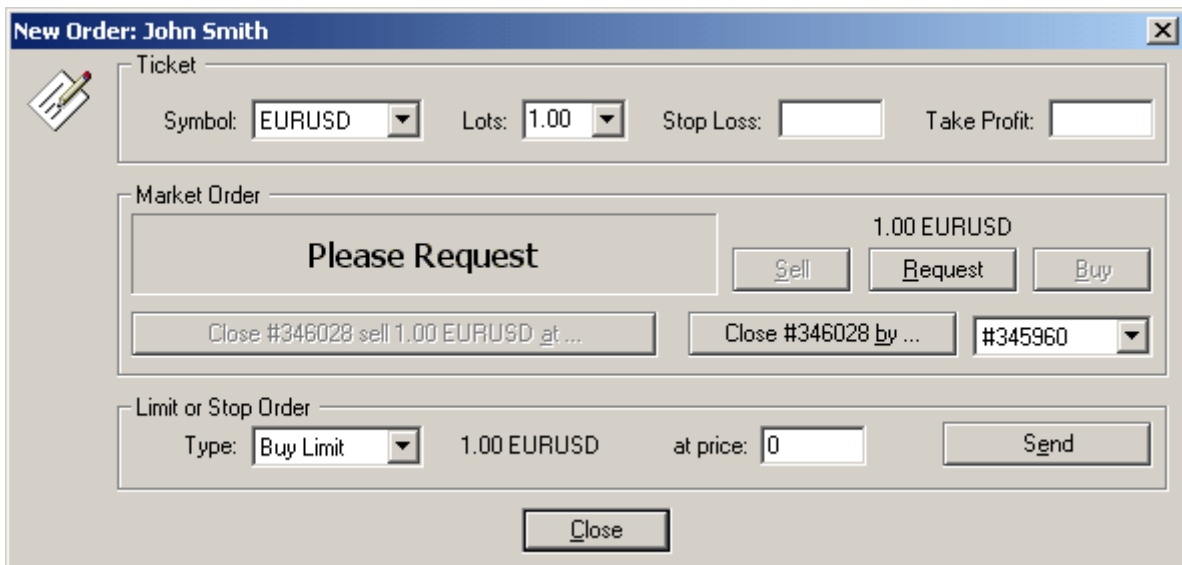
The window will appear:



Set a new level of the order in the 'Price' field and click the 'Modify' button.

### **Closing Positions and Deleting Pending Orders>**

To close a position, you should double click on the open position in the trading 'Terminal' window. The window will appear:



If you just want to close a position at the current price click the 'Request' button. A price will appear in several seconds allowing you to fully or partly close the position:

**New Order: John Smith**

Ticket

Symbol: EURUSD   Lots: 1.00   Stop Loss:   Take Profit:

Market Order: 2

1.0987 / 1.0992   1.00 EURUSD

Sell   Request   Buy

Close #345960 buy 1.00 EURUSD at 1.0987

Limit or Stop Order

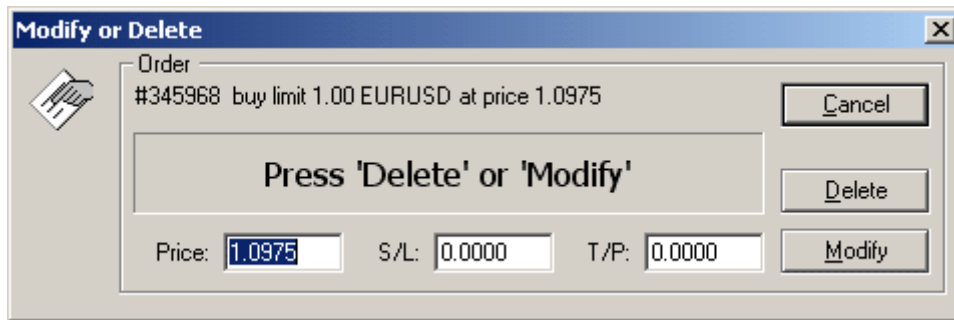
Type: Buy Limit   1.00 EURUSD   at price: 0   Send

Close

If the price is reasonable, click 'Close #... .. at ...' (in our example: Close #345960 buy 1 EURUSD at 1.0987). The number of lots can be fractional having a step of 0.1, but not less than the value of the minimum possible lot. If, after partly closing the position, the client trading under the FOREX conditions has an open position with a value under the minimum contract value, the client must close such position afterwards. A broker has the right (but is not obliged) to decline the client's request for partly closing the position. When closing a position for which there is one or more opposite positions among the open positions (i.e., for a position open for buying - one or more positions for selling, and vice versa) for the same instrument, the client has an opportunity to close this position by simultaneously closing the opposite position. To do so, you should click the 'Close # ... by ...' button (in our example: Close #346028 by ...), having pre-selected a counter-position in the right list. Here, if the counter-position has the same value as the position being closed, both positions will be closed, and the financial result of the operation will be defined by the difference between the opening rates multiplied by the value of the closing position and the one pips value for one lot. If two counter closing positions have different values, the value of the smaller of two counter positions will be considered to define the financial result, and the position will stay in the market which was opened in the direction of the larger (in value) position, the value of which is defined as the difference in values of these two positions. Note that after clicking the 'Request' button and receiving the Bid/Ask quotes, the buttons 'Buy' or 'Sell' will also become active. You can open a new buying position having clicked the 'Buy' button, or you can open a selling position having clicked the 'Sell' button. You can delete a pending order in several ways:

- double click the mouse on the pending order in the trading **'Terminal'** window;
- select a pending order in the trading terminal window and click the right mouse button. Select 'Modify or Delete Order' in the contextual menu appeared.

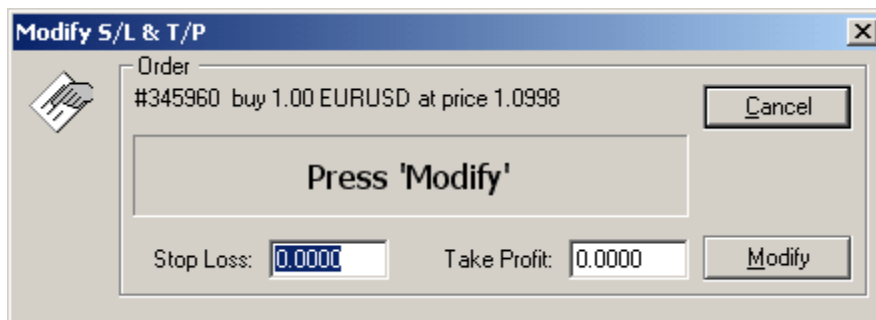
After performing any of these actions you will see the window:



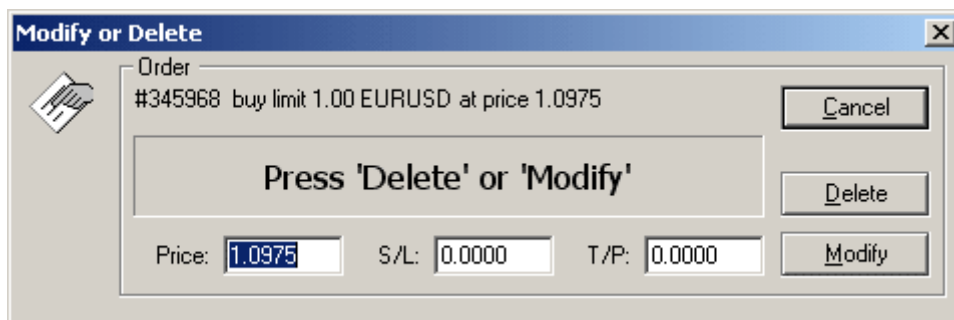
To delete a pending order click the 'Delete' button.

### Setting, Editing and Deleting StopLoss and TakeProfit orders

To set 'Stop Loss' and 'Take Profit' orders on an open position, select the open position and click the right mouse button. Select the 'Modify or Delete Order' button and the following window will appear:



Set the necessary order levels ('Stop Loss' and 'Take Profit' fields) and click the 'Modify' button. When setting orders use a period, not a comma, to separate whole and fractional parts of the numbers. If you receive a message 'Invalid stops' when setting an order it means the order was set too close to the current price, a comma was used to separate the whole and the fractional number, or Stop and Take Profit were backwards. To delete values of Stop Loss or Take Profit for the order set it at **0.0000**. To set 'Stop Loss' and 'Take Profit' orders in a pending order click the right mouse button and select 'Modify or Delete Order'.

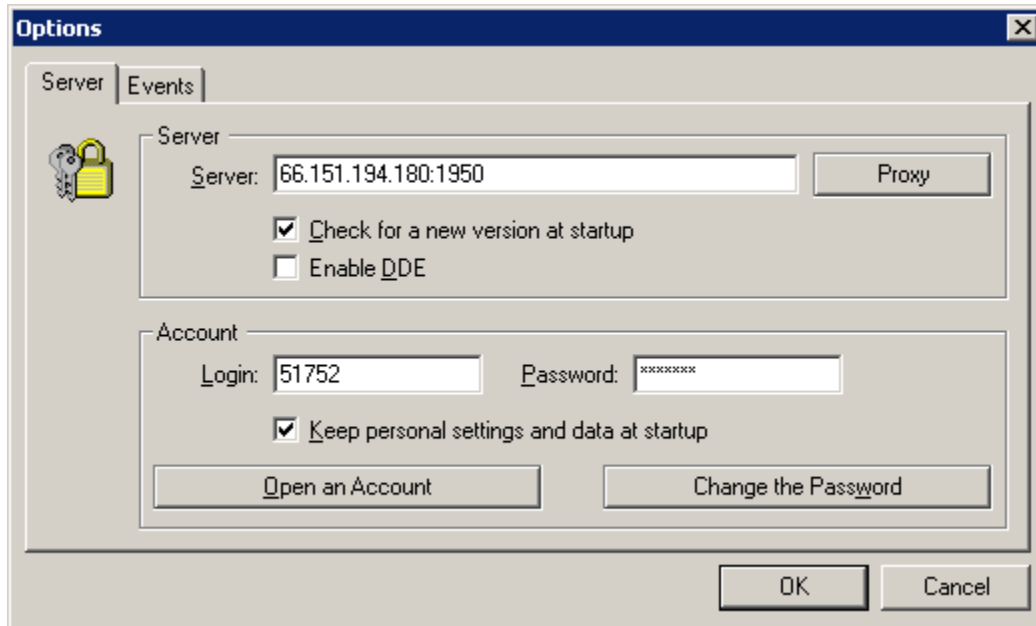


Set the necessary order levels (the 'S/L' and 'T/P' fields) and click the 'Modify' button. To delete a 'Stop Loss' or 'Take Profit', set it at **0.0000**.

### Export quotes via DDE

You can export the data into external programs in realtime via the DDE (Dynamic Data

Exchange) protocol. You should select '**Tools -> Options -> Server -> Enable DDE**' from the menu to activate quotes exporting from WindowsTrader by the DDE protocol.



Format of DDE requests (example in c:\Program Files\WindowsTrader\DDE-sample.xls):

- request BID: =**MT|BID!USDCHF** result: 1.5773
- request ASK: =**MT|ASK!USDCHF** result: 1.5778
- request HIGH: =**MT|HIGH!USDCHF** result: 1.5801
- request LOW: =**MT|LOW!USDCHF** result: 1.5741
- request TIME: =**MT|TIME!USDCHF** result: 21.05.02 9:52
- request QUOTE: =**MT|QUOTE!USDCHF** result: 21.05.02 9:52 1.5773 1.5778 1.5776

### Quotes archive

The quotes archive can be activated from the main menu '**Tools -> History Center**'.

**History Center**

Securities:

- EURUSD,Daily
- EURUSD,H1
- EURUSD,Weekly**
- GBPUSD,Daily
- GBPUSD,H1
- GBPUSD,H4
- GBPUSD,Weekly
- USDCHF,Daily
- USDCHF,H1
- USDCHF,M15
- USDJPY,Daily
- USDJPY,H1

Close

Preview: EURUSD,Weekly 734 bars

Date	Open	High	Low	Close	Vol
2003.02.24 00:00	1.0722	1.0838	1.0705	1.0808	41147
2003.03.03 00:00	1.0778	1.1071	1.0766	1.1008	47279
2003.03.10 00:00	1.1006	1.1087	1.0687	1.0747	44719
2003.03.17 00:00	1.0785	1.0847	1.0499	1.0528	49170
2003.03.24 00:00	1.0587	1.0804	1.0564	1.0785	39127
2003.03.31 00:00	1.0797	1.0963	1.0680	1.0730	42987
2003.04.07 00:00	1.0671	1.0834	1.0558	1.0749	40035
2003.04.14 00:00	1.0743	1.0980	1.0716	1.0875	40623
2003.04.21 00:00	1.0897	1.0990	1.0820	1.0972	11576

Add

Edit

Delete

Import

Export

In the upper window, the list of instruments is shown on which there is a quotes history. The quotes histories come from server when opening the corresponding chart. When double clicking the mouse on any instrument in the lower window, the quotes list for this instrument will appear. This list (history) can be edited by using the buttons '**Add**', '**Edit**', '**Delete**'. The data of the list can also be imported ('**Import**') and exported ('**Export**'). Files of the quotes histories having the names like SSSSSP.hst (where SSSSS is the name of the instrument, PP is a period of time) are saved in the '**bases**' directory. These files can be exceptionally useful when testing trading strategies.